



# Clermont State School

## School-Wide Pedagogical Framework

### High Expectations

All members of the school community contribute to our ideal of 'high standards' – ALL STUDENTS CAN LEARN AND ACHIEVE, EVERY STUDENT IN EVERY LESSON MUST BE LEARNING

### Learning Environment

#### Rules and Procedures

- PBL Policies in alliance with School-Wide approach to managing student behaviour.
- Behaviour review at the end of each day
  - Fun Friday
  - Rewards days
  - Rules, routines, expectations, rewards, consequences in each classroom
- Assemblies to reinforce priorities of health, safety and well-being
- Acknowledge positives (student of the week, Gotchas and associated milestone certificates.

#### Fostering Productive Relationships via School Community Engagement

- Parent / teacher meet and greet during pupil free day in Term 1
  - Parent / teacher interviews twice a year
  - Report cards twice a year
  - Positive feedback and regular contact with parents via class newsletters
  - P&C Association
  - Weekly newsletters (online and available for print)
  - SMS Communication
- Transitions into Prep and into Year 7
  - Student council
  - Student leadership
  - School events such as disco's, camps, movie nights etc.
  - Adopt-A- Cop

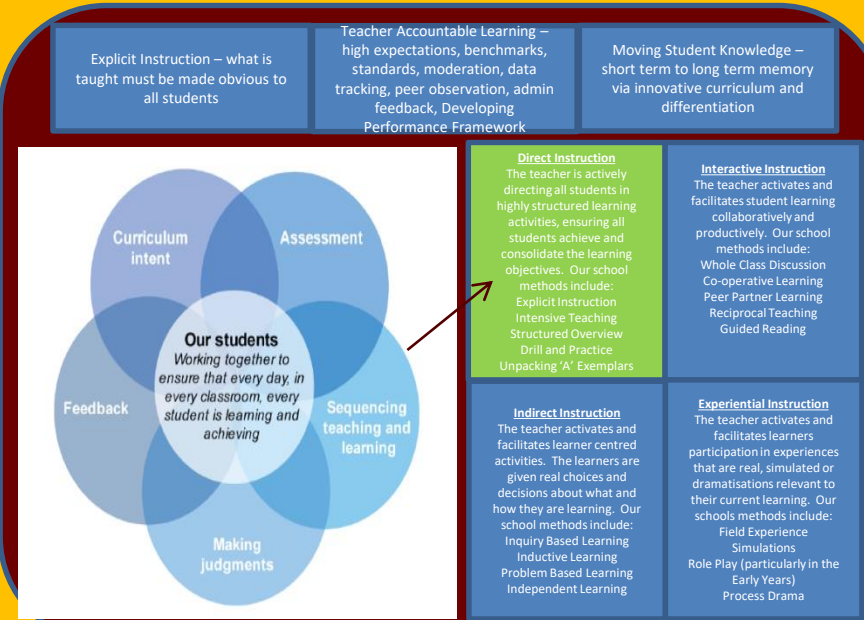
#### Collegial Engagement

- Peer to peer observations, EI observations, ESCM observations, walk throughs
- Staff and sector meetings
- Collaborative planning procedures
- Moderation processes

#### Student Engagement

- Individual learning goals
- Differentiation
- Aboriginal and Torres Strait Islander perspectives
  - ISP, ICP, ESP,
  - Extension programs
  - STLAN facilitated intervention programs
  - Math and English competitions
  - School events such as sporting events, under 8's day, Book Week etc.
    - Eisteddfod
    - STRIVE
  - Attendance awards

### Teaching, Learning and Assessment



### THE IMPERATIVES

#### For Students:

- Must believe staff genuinely care and support them.
- Must believe the work they are requested to do is at their level and is relevant.
- Must have friends at school, they must feel included and accepted.

#### Teachers:

- Must believe every student can achieve highly.
- Must value to the importance of their role in children's lives
- Must continually build rapport with every student.
- Must know the next steps for learning for every child.

#### THE GIVENS

- Good working relationships with every child: ESCMs
- Explicit high expectations – focus on students moving from Ds to Cs and Bs to As
- High levels of presentation of all work: book work, classroom display
- Feedback is ongoing
- Work routines to be constantly emphasised and reinforced – rules, routines, expectations, rewards, consequences

Through implementation of the Australian Curriculum, we aim for students to become successful learners, confident and creative individuals, and active and informed citizens